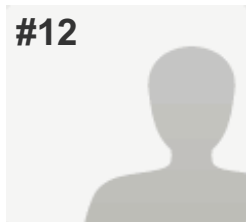


#12


COMPLETE
Collector: Web Link 1 (Web Link)

Started: Friday, February 27, 2015 4:17:46 PM

Last Modified: Friday, February 27, 2015 4:28:33 PM

Time Spent: 00:10:46

IP Address: 195.62.185.251

PAGE 1: Administrative Information (Part A)
Q1: 1. Name of Network

Italy, Emilia-Romagna Regional Network

Q2: 2. Network Coordinator

Name

Alba Carola Finarelli

Address

Viale Aldo Moro 21, 40127 Bologna

Email

afinarelli@regione.emilia-romagna.it

Phone

+390515277454

Network Website

www.regione.emilia-romagna.it

Q3: 3. Coordinating Institution

Name

Direzione Sanità e Politiche Sociali -
Regione Emilia Romagna

Address

Viale Aldo Moro 21, 40127 Bologna

Email

dgsan@regione.emilia-romagna.it

Phone

+39051 5277161

Institution Website

www.regione.emilia-romagna.it

Q4: 4. Date of Establishment and Expiration

Date of Establishment 08/24/2012,

Expiration of Network Agreement 08/24/2016

Q5: 5. Period covered by this Progress Report

From 01/01/2013,

To 12/31/2014

Q6: 6. Number of your Network's members at the time of reporting

Hospitals

0

Health Services

0

Combined Hospital / Health Services

18

Affiliated members

0

Q7: 7. Date of checking online list of all my network members on hphnet.org

Checkup date 01/01/2015

Q8: 8. The list of my members at hphnet.org is Up to date

Q9: 9. Does your Network have additional National/Regional criteria (supplementary to the International Network's criteria) for new members to join? No

Q10: 10. Has your Network delivered, or is it planning to deliver, material for the online HPH Library? No

Q11: 11. Please rate how your Network has put the mission, purpose and objectives of WHO Health Promotion principles into practice on the National/Regional level. (1 being 'Not at all' and 5 being 'Completely')(Note: Please provide information in APPENDIX)

(no label) 4

Q12: 12. Is your Network collecting membership fees? No

PAGE 2: Exchange of Knowledge and Experience (Part B)
Q13: 13. Organizational structure and way of working

Describe the organization of your Network e.g. coordinating institution, scientific committee, steering group, task forces etc. (If available, please provide an organizational chart in APPENDIX)

Regionally, the HPH Regional Network is coordinated directly by the General Health and Social Policy Department of the Emilia-Romagna Region, and specifically by the public health service. In particular, the service is governed by the Reggio Emilia Local Health Service, which is the centre of coordination that provides support to the regional coordinator. In 2011, each regional health care unit in the HPH regional network again appointed its own HPH contact person. This person sits on a steering committee that is regularly convened by the regional coordinator to systematically discuss the subject of promoting health with all health care units. The objective for the future is to have these professionals set up "laboratories" for uncovering experiences and critical problems in this area, and for coming up with proposals for common activities aimed at promoting health and shared by different local health units

Q14: 14. Outcomes and main achievements in your Network

Please describe the main outcomes and achievements

1) Completion of a project that integrates HPH standards with the regional accreditation model during the implementation of the Regional Prevention Plan, through final validation of a checklist that was developed and tested in a health care unit. Also, in early 2011, the checklist was officially sent to all health care units, and a proposal was made to use this tool in their self-evaluation processes, given the appropriateness of including accreditation checks and a voluntary interview on the proposed themes at the unit, in much the same way as the current practice employed for risk management.² Reestablishment and strengthening of the regional HPH coordination group as a setting for sharing ideas and for a systematic discussion of health promotion with all the health care units, in order to mutually establish and plan proposals that take into account not only the priorities that emerge from the activities of the international HPH network, but also the policy of the Emilia-Romagna Region concerning the promotion of health. 3) Diffuse participation in conferences, and dissemination of the materials and projects that are created and implemented at the units in the HPH network 4) regional communication campaign on the use of stairs in public places

Please describe the main facilitators and supportive factors encountered

Gaining support from the Regional Government, clarifying the convergence of the HPH principles and interventions and the regional health policy objectives and values

Please describe the main problems encountered

To find the appropriate economic support

What do you think is the limit for more hospitals and health services in your country/region to join the activities of your Network ?

All institutions are already in the network, the problem is to keep them motivated and active, considering the huge amount of activities they are to fulfil to achieve the regional government objectives

Q15: 15. Evaluation and monitoring

Has any network evaluation and monitoring been carried out according to implementation of the WHO Standards, projects etc.? (Note: If yes, please provide information in APPENDIX)	No
Have any additional analysis or surveys been carried out? (Note: If yes, please provide information in APPENDIX)	No
Which strategies have been used for evaluation and monitoring?	The Regional Accreditation System

Q16: 16. Which of the WHO Standards and Sub-Standards have been given priority in your Network?

Standard 1: Management Policy	Priority
Standard 2: Patient Assessment	Priority
Standard 4: Promoting a Healthy Workplace	Priority

Q17: Which of the WHO Standards and Sub-Standards have been implemented in your Network?17. Standard 1: Management Policy

The organization identifies responsibilities for health promotion	Yes
The organization allocates resources for the implementation of health promotion	Yes
The organization ensures the availability of procedures for collection and evaluation of data in order to monitor the quality of health promotion activities	No

Q18: 18. Standard 2: Patient Assessment

The organization ensures the availability of procedures for all patients to assess their need for health promotion	No
The assessment of a patient's need for health promotion is done at first contact with the hospital. This is kept under review and adjusted as necessary according to changes in the patient's clinical condition or on request	No
The patient's needs-assessment reflects information provided by others and ensures sensitivity to social and cultural background	Yes

Q19: 19. Standard 3: Patient Information and Intervention

Based on the health promotion needs assessment, the patient is informed of factors impacting on their health and, in partnership with the patient, a plan for relevant activities for health promotion is agreed Yes

The organization ensures that all patients, staff and visitors have access to general information on factors influencing health Yes

Q20: 20. Standard 4: Promoting a Healthy Workplace

The organization ensures the development and implementation of a healthy and safe workplace Yes

The organization ensures the development and implementation of a comprehensive Human Resources Strategy that includes training and development of health promotion skills of staff No

The organization ensures availability of procedures to develop and maintain staff awareness on health issues No

Q21: 21. Standard 5: Continuity and cooperation

The organization ensures the health promotion services are coherent with current provisions and regional health policy plans Yes

The organization ensures the availability and implementation of health promotion activities and procedures during out-patient visits and after patient discharge Yes

Q22: 22. Standard and sub-standards:

Are developed on basis of formal assessment of need? No

Are developed on basis of National/Regional policy? Yes

Implementation is monitored by Hospitals/Health Services? Yes

Implementation of monitoring is followed up by Hospitals/Health Services? Yes

Q23: 23. Implementation of national, regional or local projects

Are chosen on basis of formal assessment of need by Hospitals/Health Services? Yes

Are chosen on basis of National/Regional policy? Yes

Implementation is monitored by Hospitals/Health Services? Yes

Implementation of monitoring is followed up by Hospitals/Health Services? Yes

Q24: WHO-HPH STANDARDS & INDICATORS
24. Has your Network supported member hospitals to implement and follow up on the standards and indicators? Yes (Note: Please provide information in APPENDIX)

Q25: 25. Have your Network's members implemented Standard 1 and elements 2-5? Some have

Q26: TEACHING & TRAINING
26. Has your Network participated in International WHO-HPH Schools? No

Q27: 27. Has your network established local teaching and training? (hands-on, e-learning etc.) Yes (Note: Please provide information in APPENDIX)

Q28: COMMUNICATION & ADVOCACY
28. Has your Network advocated HPH locally? Yes, at 1 or more events (Note: Please provide information in APPENDIX)

Q29: 29. Has your Network participated at local policy level? No

Q30: 30. Has your Network translated Global HPH Strategy, key documents and tools and sent out to members? Partly (please provide details in APPENDIX)

Q31: 31. Has your Network informed the International HPH Network about your national or regional communication and advocacy efforts? No

Q32: 32. How many new "net" member has your Network recruited in the period?

2013 1

2014 0

Q33: ADVANCEMENT OF CLINICAL HEALTH PROMOTION RESEARCH
33. Has your Network participated in multi-centre research projects? No

Q34: 34. Has your Network informed at policy level nationally or regionally about HPH research? No

Q35: 35. Has your Network published any HPH research papers in the Clin HP Journal or other journals within the period?	Yes (please provide details in APPENDIX)
Q36: 36. Has your Network delivered any entries to the HPH scientific library / database?	No
Q37: 37. Has your Network disseminated HPH research among your members?	Yes (please provide details in APPENDIX)
Q38: OVERALL38. Has your Network developed a national or regional action plan?	Yes (Please provide information in APPENDIX)
Q39: ADDITIONAL QUESTIONS39. Does your Network have additional strategy, priorities and focus areas:	
For 2013-2015? (Note: If yes, please provide information in APPENDIX)	Yes
For the next period? (Note: If yes, please provide information in APPENDIX)	No
Q40: 40. Connection to National/Regional health policy and strategies	
Is health promotion a focus area in National/Regional health policies, laws and regulations? (Note: If yes, please provide information in APPENDIX)	Yes
Has last period's changes in National/Regional health policies had directly influence HPH activities? (Note: If yes, please provide information in APPENDIX)	Yes
Is the National/Regional health system context supportive of the development of HPH?	Yes
Q41: 41. Have you received recognition from public authorities, health systems etc.?	Yes (Note: Please provide information in APPENDIX)
Q42: 42. Are key documents (Vienna Recommendations, Ottawa Charter, Information Package, WHO Standards (SAT), Letter of Intent, Constitution etc.) available in your local language?	Yes
Q43: 43. Please list the period's HPH related meetings and conferences conducted by your Network, if applicable (indicating organizers, participants, presentations etc.)	no

Q44: 44. Collaboration with the International HPH Network and with WHO

Does your Network have any participation in international, national or regional task forces and/or working groups? (Note: If yes, please provide information in APPENDIX)

Yes

Does your Network collaborate with WHO? (Note: If yes, please provide information in APPENDIX)

No

Does your Network issue any guidelines on how to implement recommendations from the task forces and working groups, e.g. Migrant Friendly and Culturally Competent Health Care?

Yes

Q45: 45. How do you think that the International HPH Network, the GB and the GA could better meet the needs of the National/Regional networks?

The Int'l Network could better meet the needs of our Regional Network by 'softening' the language around the requirements in the Letter of Intent. For our hospitals, the HPH standards are not the driver of HP in our health system, so this requirement, as it is written, often dissuades organizations from joining.

Q46: 46. How do you think your Network could better contribute to the International HPH Network's fulfilment of its objectives?

There are very high quality researchers doing high quality HPH-related research in our Region. We could contribute and exchange more of our knowledge with each other and the members of the Int'l HPH Network.