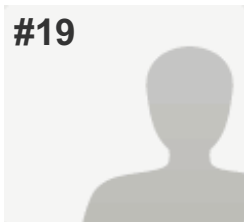


#19



COMPLETE

Collector: Web Link 1 (Web Link)

Started: Wednesday, April 22, 2015 2:19:58 PM

Last Modified: Wednesday, April 22, 2015 2:35:12 PM

Time Spent: 00:15:14

IP Address: 158.126.247.21

PAGE 1: Administrative Information (Part A)

Q1: 1. Name of Network

Swedish HPH network (Nätverket hälsofrämjande hälso- och sjukvård)

Q2: 2. Network Coordinator

Name

Margareta Kristenson

Address

Hälsans hus, 581 85 Linköping

Email

margareta.kristenson@liu.se

Phone

010-103 50 75

Network Website

www.hfsnatverket.se

Q3: 3. Coordinating Institution

Name

Unit for Health Analysis

Address

Region Östergötland, Centrum för hälso- och vårdutveckling, 581 85 Linköping

Email

Lovisa.karlsson@regionostergotland.se

Phone

0046-10 103 72 68

Institution Website

<http://www2.lio.se/Startsida/Verksamheter/Halso--och-vardutvecklingscentrum/Enheten-for-halsoanalys/>

Q4: 4. Date of Establishment and Expiration

Date of Establishment 10/25/1996

Q5: 5. Period covered by this Progress Report

From 01/01/2013,

To 12/31/2014

Q6: 6. Number of your Network's members at the time of reporting

Combined Hospital / Health Services

87

Q7: 7. Date of checking online list of all my network members on hphnet.org

Checkup date 04/13/2015

Q8: 8. The list of my members at hphnet.org is

Not up to date (please provide correct list in APPENDIX)

Q9: 9. Does your Network have additional National/Regional criteria (supplementary to the International Network's criteria) for new members to join?

Yes (please describe in detail in APPENDIX)

Q10: 10. Has your Network delivered, or is it planning to deliver, material for the online HPH Library?

No

Q11: 11. Please rate how your Network has put the mission, purpose and objectives of WHO Health Promotion principles into practice on the National/Regional level. (1 being 'Not at all' and 5 being 'Completely')(Note: Please provide information in APPENDIX)

(no label)

5

Q12: 12. Is your Network collecting membership fees?

Yes

PAGE 2: Exchange of Knowledge and Experience (Part B)
Q13: 13. Organizational structure and way of working

Describe the organization of your Network e.g. coordinating institution, scientific committee, steering group, task forces etc. (If available, please provide an organizational chart in APPENDIX)

in appendix

Q14: 14. Outcomes and main achievements in your Network

Please describe the main outcomes and achievements

Continuous growth both in quantity of members and quality of work content

Please describe the main facilitators and supportive factors encountered

Through support from top management

Please describe the main problems encountered

Time and resources

What do you think is the limit for more hospitals and health services in your country/region to join the activities of your Network ?

See above; Our experience is that if hospitals can find our activities meaningful and to contribute to better health service, they also finds the time and money for it.

Q15: 15. Evaluation and monitoring

Has any network evaluation and monitoring been carried out according to implementation of the WHO Standards, projects etc.? (Note: If yes, please provide information in APPENDIX)	Yes
Have any additional analysis or surveys been carried out? (Note: If yes, please provide information in APPENDIX)	Yes
Which strategies have been used for evaluation and monitoring?	In appendix

Q16: 16. Which of the WHO Standards and Sub-Standards have been given priority in your Network?

Standard 1: Management Policy	Priority
Standard 2: Patient Assessment	Priority
Standard 3: Patient Information and Intervention	Priority
Standard 4: Promoting a Healthy Workplace	Priority
Standard 5: Continuity and Cooperation	Priority

Q17: Which of the WHO Standards and Sub-Standards have been implemented in your Network?17. Standard 1: Management Policy

The organization identifies responsibilities for health promotion	Yes
The organization allocates resources for the implementation of health promotion	Yes
The organization ensures the availability of procedures for collection and evaluation of data in order to monitor the quality of health promotion activities	Yes

Q18: 18. Standard 2: Patient Assessment

Respondent skipped this question

Q19: 19. Standard 3: Patient Information and Intervention

Based on the health promotion needs assessment, the patient is informed of factors impacting on their health and, in partnership with the patient, a plan for relevant activities for health promotion is agreed	Yes
The organization ensures that all patients, staff and visitors have access to general information on factors influencing health	Yes

Q20: 20. Standard 4: Promoting a Healthy Workplace

The organization ensures the development and implementation of a healthy and safe workplace Yes

The organization ensures the development and implementation of a comprehensive Human Resources Strategy that includes training and development of health promotion skills of staff Yes

The organization ensures availability of procedures to develop and maintain staff awareness on health issues Yes

Q21: 21. Standard 5: Continuity and cooperation

The organization ensures the health promotion services are coherent with current provisions and regional health policy plans Yes

The organization ensures the availability and implementation of health promotion activities and procedures during out-patient visits and after patient discharge Yes

Q22: 22. Standard and sub-standards:

Respondent skipped this question

Q23: 23. Implementation of national, regional or local projects

Are chosen on basis of formal assessment of need by Hospitals/Health Services? Yes

Are chosen on basis of National/Regional policy? Yes

Implementation is monitored by Hospitals/Health Services? No

Implementation of monitoring is followed up by Hospitals/Health Services? No

Q24: WHO-HPH STANDARDS & INDICATORS24. Has your Network supported member hospitals to implement and follow up on the standards and indicators? No

Q25: 25. Have your Network's members implemented Standard 1 and elements 2-5? Most have

Q26: TEACHING & TRAINING26. Has your Network participated in International WHO-HPH Schools? No

Q27: 27. Has your network established local teaching and training? (hands-on, e-learning etc.) Yes (Note: Please provide information in APPENDIX)

HPH N/R Network Progress Reports 2014

Q28: COMMUNICATION & ADVOCACY 28. Has your Network advocated HPH locally?	Yes, at 1 or more events (Note: Please provide information in APPENDIX)
Q29: 29. Has your Network participated at local policy level?	Yes, at 1 or more event (please provide information in APPENDIX)
Q30: 30. Has your Network translated Global HPH Strategy, key documents and tools and sent out to members?	No
Q31: 31. Has your Network informed the International HPH Network about your national or regional communication and advocacy efforts?	No
Q32: 32. How many new "net" member has your Network recruited in the period?	
2013	4
2014	0
Q33: ADVANCEMENT OF CLINICAL HEALTH PROMOTION RESEARCH 33. Has your Network participated in multi-centre research projects?	No
Q34: 34. Has your Network informed at policy level nationally or regionally about HPH research?	No
Q35: 35. Has your Network published any HPH research papers in the Clin HP Journal or other journals within the period?	No
Q36: 36. Has your Network delivered any entries to the HPH scientific library / database?	No
Q37: 37. Has your Network disseminated HPH research among your members?	Yes (please provide details in APPENDIX)
Q38: OVERALL 38. Has your Network developed a national or regional action plan?	Yes (Please provide information in APPENDIX)
Q39: ADDITIONAL QUESTIONS 39. Does your Network have additional strategy, priorities and focus areas:	
For 2013-2015? (Note: If yes, please provide information in APPENDIX)	Yes
For the next period? (Note: If yes, please provide information in APPENDIX)	Yes

Q40: 40. Connection to National/Regional health policy and strategies

Is health promotion a focus area in National/Regional health policies, laws and regulations? (Note: If yes, please provide information in APPENDIX)

Yes

Has last period's changes in National/Regional health policies had directly influence HPH activities? (Note: If yes, please provide information in APPENDIX)

Yes

Is the National/Regional health system context supportive of the development of HPH?

Yes

Q41: 41. Have you received recognition from public authorities, health systems etc.?

Yes (Note: Please provide information in APPENDIX)

Q42: 42. Are key documents (Vienna Recommendations, Ottawa Charter, Information Package, WHO Standards (SAT), Letter of Intent, Constitution etc.) available in your local language?

Yes

Q43: 43. Please list the period's HPH related meetings and conferences conducted by your Network, if applicable (indicating organizers, participants, presentations etc.)

We hold regular meetings, several national conferences and each task force has regular national meetings (12 Taskforce)

Q44: 44. Collaboration with the International HPH Network and with WHO

Does your Network have any participation in international, national or regional task forces and/or working groups? (Note: If yes, please provide information in APPENDIX)

Yes

Does your Network collaborate with WHO? (Note: If yes, please provide information in APPENDIX)

No

Does your Network issue any guidelines on how to implement recommendations from the task forces and working groups, e.g. Migrant Friendly and Culturally Competent Health Care?

Yes

Q45: 45. How do you think that the International HPH Network, the GB and the GA could better meet the needs of the National/Regional networks?

This form is extensive, a simpler questionnaire would be appreciated, and we also do wish accessible feedback on the results of this ambitious survey. Sweden is interested to learn from other countries but this needs to be easily accessible, for example in the form of brief case telling, alternatively movies via YouTube or similar to inspire new approaches and new ideas from other countries . These we could, then via the Swedish network in turn communicate out to our Swedish members.

Q46: 46. How do you think your Network could better contribute to the International HPH Network's fulfilment of its objectives?

See above!