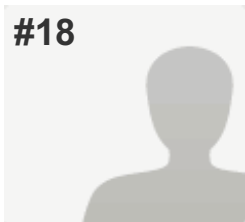


#18

**COMPLETE****Collector:** Web Link 1 (Web Link)**Started:** Sunday, March 29, 2015 5:28:27 PM**Last Modified:** Sunday, March 29, 2015 6:09:30 PM**Time Spent:** 00:41:02**IP Address:** 83.9.243.49**PAGE 1: Administrative Information (Part A)****Q1: 1. Name of Network**

Polish HPH Network

Q2: 2. Network Coordinator

Name

Bożena Walewska-Zielecka

Address

ul. Banacha 1a blok F

Email

bozena.walewska-zielecka@medicover.pl

Phone

*48-693-53-23-39

Network Website

none

Q3: 3. Coordinating Institution

Name

Department of Public Health, Health
Sciences Faculty Warsaw Medical
University

Address

Żwirki i Wigury 61 Street, Warszawa

Email

zzp@wum.edu.pl

Phone

0048-22-599 21 80

Institution Website

<http://zzp.wum.edu.pl/>**Q4: 4. Date of Establishment and Expiration**

Date of Establishment 02/28/2011

Q5: 5. Period covered by this Progress Report

From 01/03/2013,

To 12/31/2014

Q6: 6. Number of your Network's members at the time of reporting

Hospitals

22

Health Services

1

Combined Hospital / Health Services

0

Affiliated members

0

Q7: 7. Date of checking online list of all my network members on hphnet.org

Checkup date 03/29/2015

Q8: 8. The list of my members at hphnet.org is

Not up to date (please provide correct list in APPENDIX)

Q9: 9. Does your Network have additional National/Regional criteria (supplementary to the International Network's criteria) for new members to join?

No

Q10: 10. Has your Network delivered, or is it planning to deliver, material for the online HPH Library?

Yes (please provide details in APPENDIX)

Q11: 11. Please rate how your Network has put the mission, purpose and objectives of WHO Health Promotion principles into practice on the National/Regional level. (1 being 'Not at all' and 5 being 'Completely')(Note: Please provide information in APPENDIX)

(no label)

4

Q12: 12. Is your Network collecting membership fees?

No

PAGE 2: Exchange of Knowledge and Experience (Part B)

Q13: 13. Organizational structure and way of working

Describe the organization of your Network e.g. coordinating institution, scientific committee, steering group, task forces etc. (If available, please provide an organizational chart in APPENDIX)

The organization consists of the office of National HPH Network Coordinator, National HPH Coordinator, v-ce National Coordinator and local hospital HPH Coordinators.

Q14: 14. Outcomes and main achievements in your Network

Please describe the main outcomes and achievements

implementation of nearly all standards; yearly meetings with coordinators; publication of two brochures "HPH Hospitals Best Practices"

Please describe the main facilitators and supportive factors encountered

university financial support; individual motivation

Please describe the main problems encountered

lack of structured financial support,

What do you think is the limit for more hospitals and health services in your country/region to join the activities of your Network ?

poor communication; expectation of more work to implement the HPH standards

Q15: 15. Evaluation and monitoring

Has any network evaluation and monitoring been carried out according to implementation of the WHO Standards, projects etc.? (Note: If yes, please provide information in APPENDIX)	Yes
Have any additional analysis or surveys been carried out? (Note: If yes, please provide information in APPENDIX)	No
Which strategies have been used for evaluation and monitoring?	self assesment manual; standards and indexes according to assesment tools

Q16: 16. Which of the WHO Standards and Sub-Standards have been given priority in your Network?

Standard 1: Management Policy	Priority
Standard 2: Patient Assessment	Priority
Standard 3: Patient Information and Intervention	Priority
Standard 4: Promoting a Healthy Workplace	Priority
Standard 5: Continuity and Cooperation	Priority

Q17: Which of the WHO Standards and Sub-Standards have been implemented in your Network?17. Standard 1: Management Policy

The organization identifies responsibilities for health promotion	Yes
The organization allocates resources for the implementation of health promotion	Yes
The organization ensures the availability of procedures for collection and evaluation of data in order to monitor the quality of health promotion activities	No

Q18: 18. Standard 2: Patient Assessment

The organization ensures the availability of procedures for all patients to assess their need for health promotion	Yes
The assessment of a patient's need for health promotion is done at first contact with the hospital. This is kept under review and adjusted as necessary according to changes in the patient's clinical condition or on request	Yes
The patient's needs-assessment reflects information provided by others and ensures sensitivity to social and cultural background	No

Q19: 19. Standard 3: Patient Information and Intervention

Based on the health promotion needs assessment, the patient is informed of factors impacting on their health and, in partnership with the patient, a plan for relevant activities for health promotion is agreed

Yes

The organization ensures that all patients, staff and visitors have access to general information on factors influencing health

Yes

Q20: 20. Standard 4: Promoting a Healthy Workplace

The organization ensures the development and implementation of a healthy and safe workplace

Yes

The organization ensures the development and implementation of a comprehensive Human Resources Strategy that includes training and development of health promotion skills of staff

Yes

The organization ensures availability of procedures to develop and maintain staff awareness on health issues

Yes

Q21: 21. Standard 5: Continuity and cooperation

The organization ensures the health promotion services are coherent with current provisions and regional health policy plans

Yes

The organization ensures the availability and implementation of health promotion activities and procedures during out-patient visits and after patient discharge

No

Q22: 22. Standard and sub-standards:

Are developed on basis of formal assessment of need?

Yes

Are developed on basis of National/Regional policy?

Yes

Implementation is monitored by Hospitals/Health Services?

Yes

Implementation of monitoring is followed up by Hospitals/Health Services?

Yes

Q23: 23. Implementation of national, regional or local projects

Are chosen on basis of formal assessment of need by Hospitals/Health Services? Yes

Are chosen on basis of National/Regional policy? Yes

Implementation is monitored by Hospitals/Health Services? Yes

Implementation of monitoring is followed up by Hospitals/Health Services? Yes

Q24: WHO-HPH STANDARDS & INDICATORS
24. Has your Network supported member hospitals to implement and follow up on the standards and indicators? Yes (Note: Please provide information in APPENDIX)

Q25: 25. Have your Network's members implemented Standard 1 and elements 2-5? Most have

Q26: TEACHING & TRAINING
26. Has your Network participated in International WHO-HPH Schools? No

Q27: 27. Has your network established local teaching and training? (hands-on, e-learning etc.) No

Q28: COMMUNICATION & ADVOCACY
28. Has your Network advocated HPH locally? Yes, at 1 or more events (Note: Please provide information in APPENDIX)

Q29: 29. Has your Network participated at local policy level? No

Q30: 30. Has your Network translated Global HPH Strategy, key documents and tools and sent out to members? Partly (please provide details in APPENDIX)

Q31: 31. Has your Network informed the International HPH Network about your national or regional communication and advocacy efforts? No

Q32: 32. How many new "net" member has your Network recruited in the period?

2013 1

2014 2

Q33: ADVANCEMENT OF CLINICAL HEALTH PROMOTION RESEARCH
33. Has your Network participated in multi-centre research projects? No

Q34: 34. Has your Network informed at policy level nationally or regionally about HPH research? No

Q35: 35. Has your Network published any HPH research papers in the Clin HP Journal or other journals within the period?	No
Q36: 36. Has your Network delivered any entries to the HPH scientific library / database?	No
Q37: 37. Has your Network disseminated HPH research among your members?	No
Q38: OVERALL38. Has your Network developed a national or regional action plan?	No
Q39: ADDITIONAL QUESTIONS39. Does your Network have additional strategy, priorities and focus areas:	
For 2013-2015? (Note: If yes, please provide information in APPENDIX)	No
For the next period? (Note: If yes, please provide information in APPENDIX)	No
Q40: 40. Connection to National/Regional health policy and strategies	
Is health promotion a focus area in National/Regional health policies, laws and regulations? (Note: If yes, please provide information in APPENDIX)	Yes
Has last period's changes in National/Regional health policies had directly influence HPH activities? (Note: If yes, please provide information in APPENDIX)	No
Is the National/Regional health system context supportive of the development of HPH?	Yes
Q41: 41. Have you received recognition from public authorities, health systems etc.?	No
Q42: 42. Are key documents (Vienna Recommendations, Ottawa Charter, Information Package, WHO Standards (SAT), Letter of Intent, Constitution etc.) available in your local language?	No (Note: If no, please provide information in APPENDIX)
Q43: 43. Please list the period's HPH related meetings and conferences conducted by your Network, if applicable (indicating organizers, participants, presentations etc.)	Yearly HPH Coordinators meeting; Yearly Conference on Health Promotion organized by one member

Q44: 44. Collaboration with the International HPH Network and with WHO

Does your Network have any participation in international, national or regional task forces and/or working groups? (Note: If yes, please provide information in APPENDIX)

No

Does your Network collaborate with WHO? (Note: If yes, please provide information in APPENDIX)

Yes

Does your Network issue any guidelines on how to implement recommendations from the task forces and working groups, e.g. Migrant Friendly and Culturally Competent Health Care?

No

Q45: 45. How do you think that the International HPH Network, the GB and the GA could better meet the needs of the National/Regional networks?

Providing of the arguments on benefits of HPH membership for hospital management

Q46: 46. How do you think your Network could better contribute to the International HPH Network's fulfilment of its objectives?

More advocacy for National/Regional Networks; more marketing of ideas